



**INTERREG NEXT
POLAND-BELARUS-UKRAINE
PROGRAMMING**



it's a process...



RESULT-ORIENTED
MONITORING REPORT

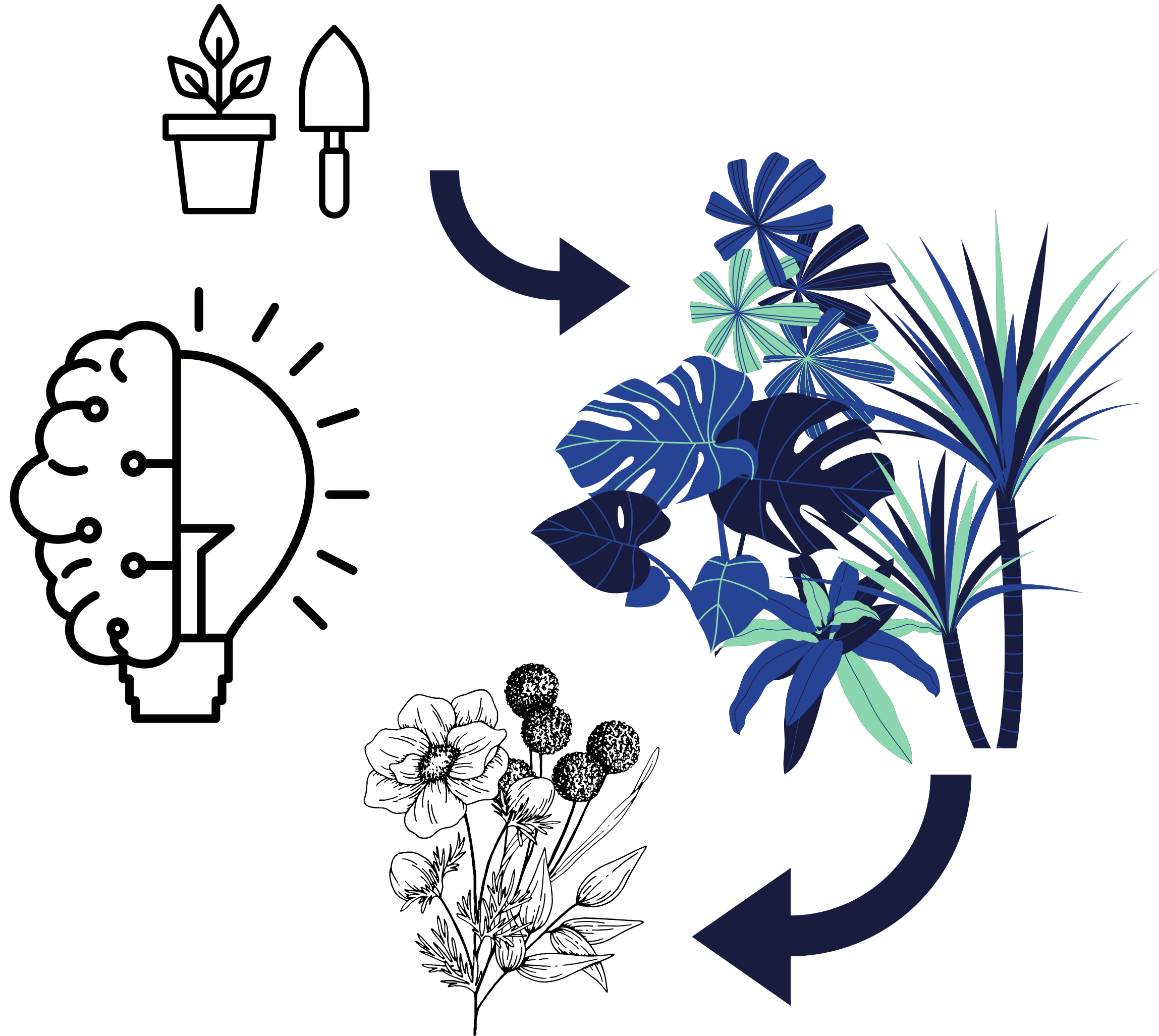
ONLINE SURVEY

CONSULTATIONS WITH THE JPC
AND NATIONAL AUTHORITIES

COMMISSION
ORIENTATION PAPER

SOCIO-ECONOMIC ANALYSIS OF
THE PROGRAMME AREA

WORKSHOPS FOR
STAKEHOLDERS



ROM REPORT

CONCLUSIONS

RESPONSE



Ukraine should ensure staff retention & development support for newcomers



Improving joint actions (police & fire fighting) across the border and changing policies & procedures to enable quick response



**Retraining or upgrading skills and professional qualifications
Increasing digital skills among employees**



**Common training of border services
Improving the service at existing border crossing**



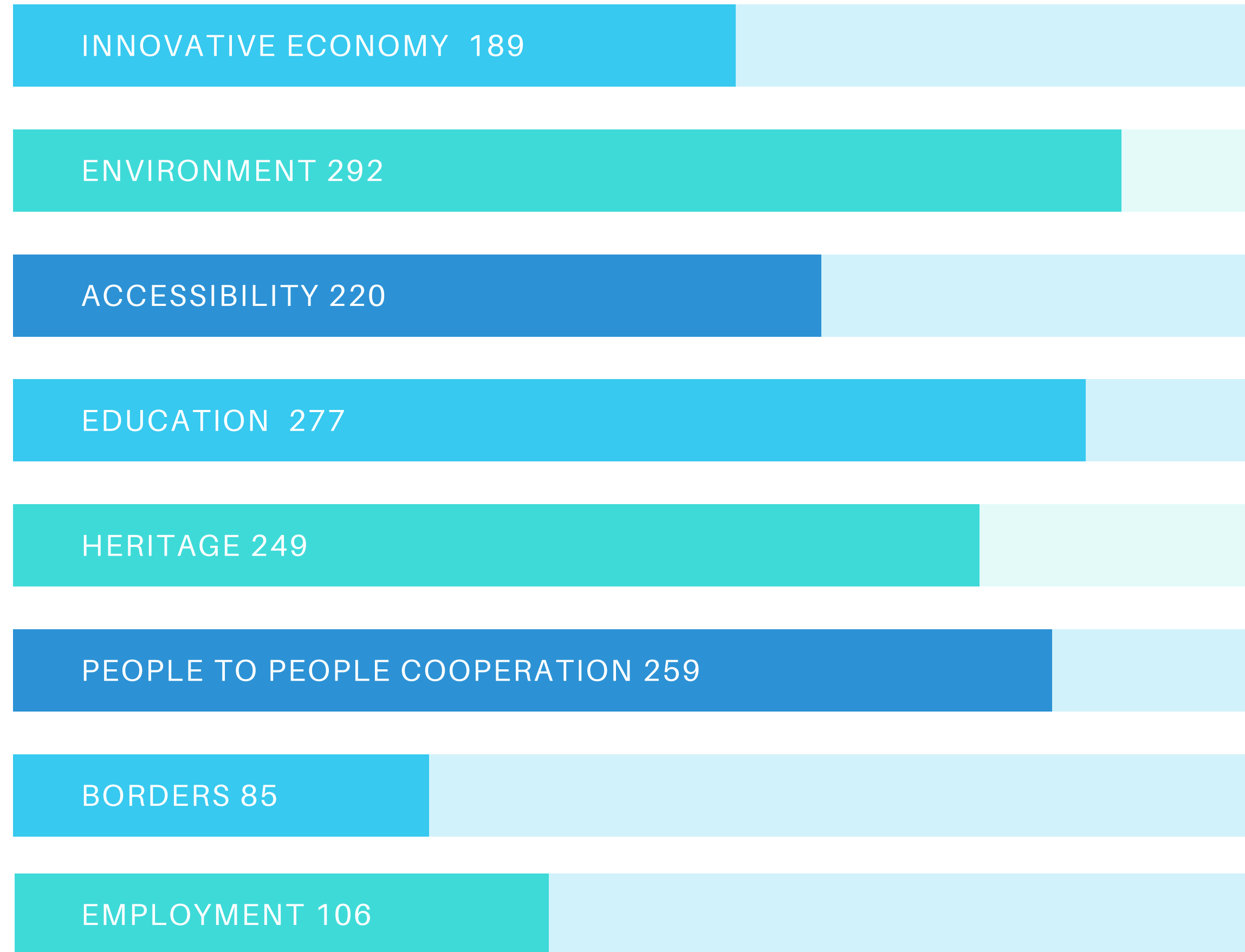
Education



Borders

ONLINE SURVEY

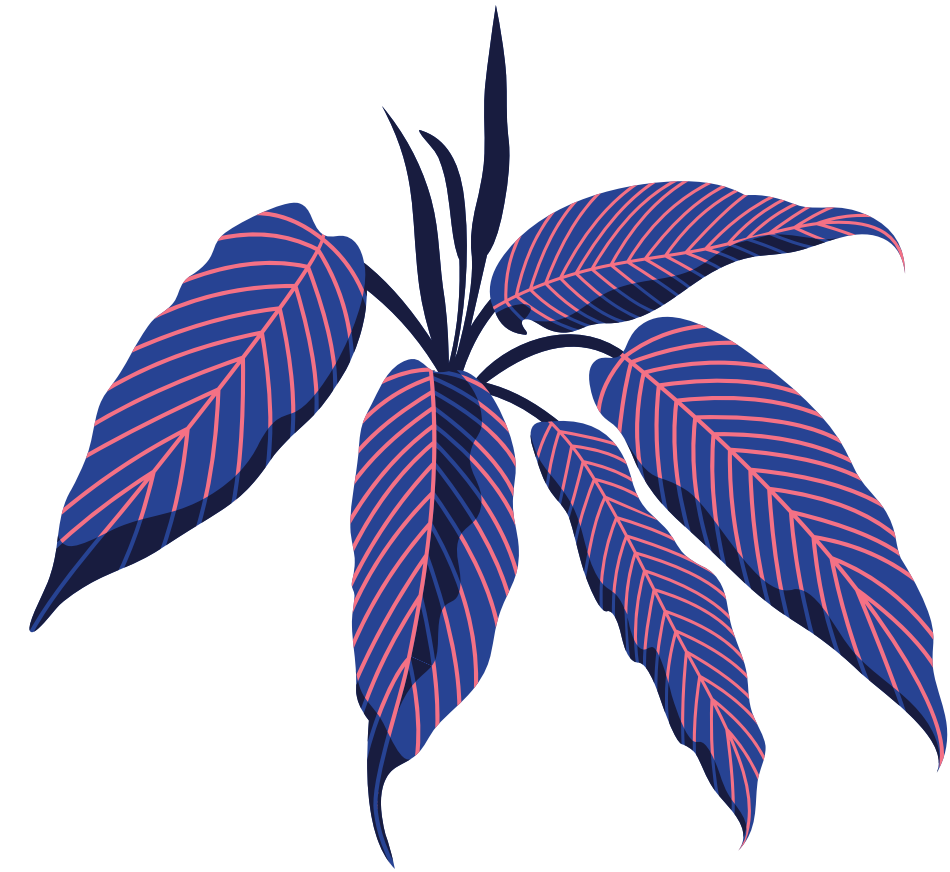
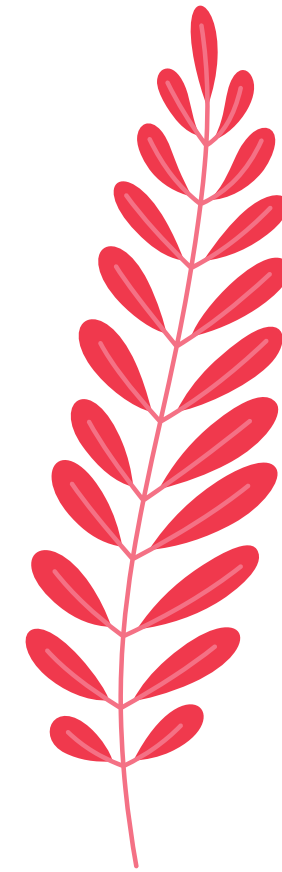
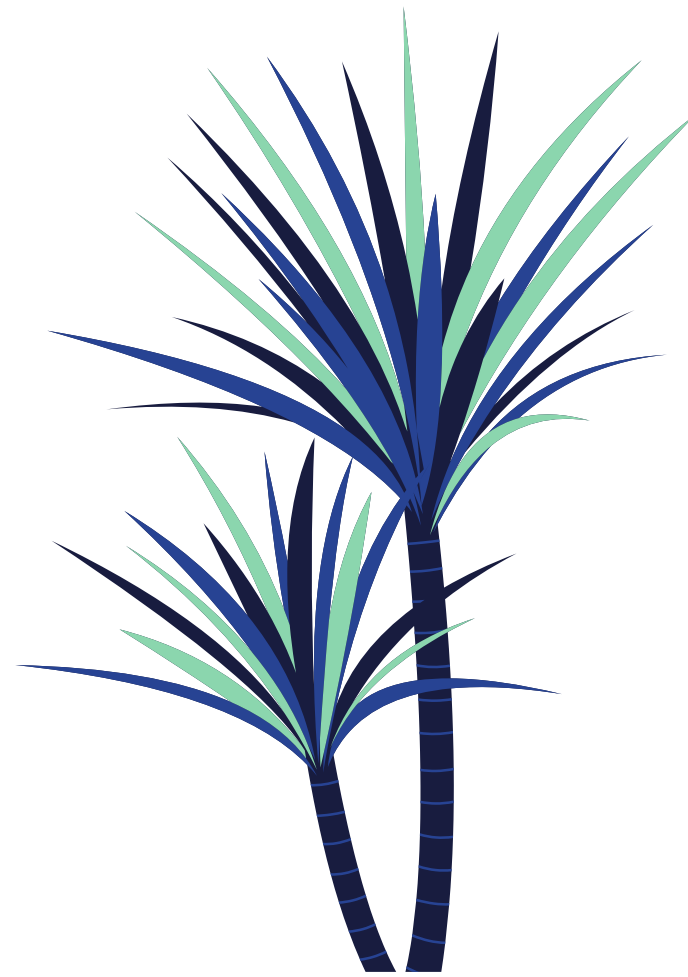
- launched: end of 2019
- over 500 participants
- participants: local government, NGOs, healthcare, education and culture institutions
- newcomers





Tourism

P2P actions



Education

Environment

Borders

JOINT PAPER ON INTERREG NEXT STRATEGIC PROGRAMMING 2021-2027 (EUROPEAN COMMISSION)

Greener, low carbon Europe

- Energy efficiency, energy-saving lighting
- Problem with high emissions of air pollutants; poor quality fuels

More social Europe

- Supporting cross-border labour market
- Sustainable & affordable healthcare services across borders

Better cooperation governance

- Supporting cross-border labour market
- Sustainable & affordable healthcare services across borders

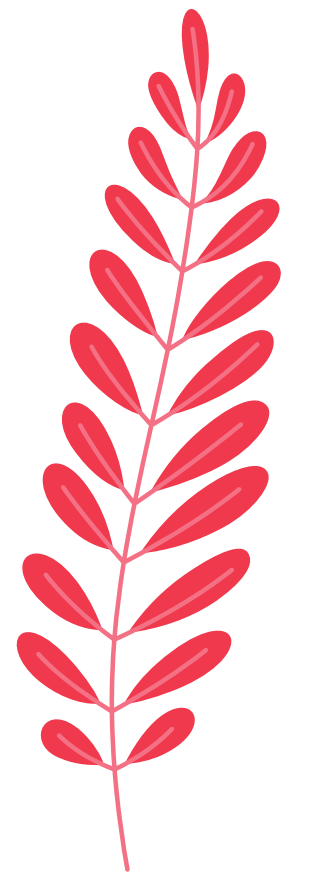
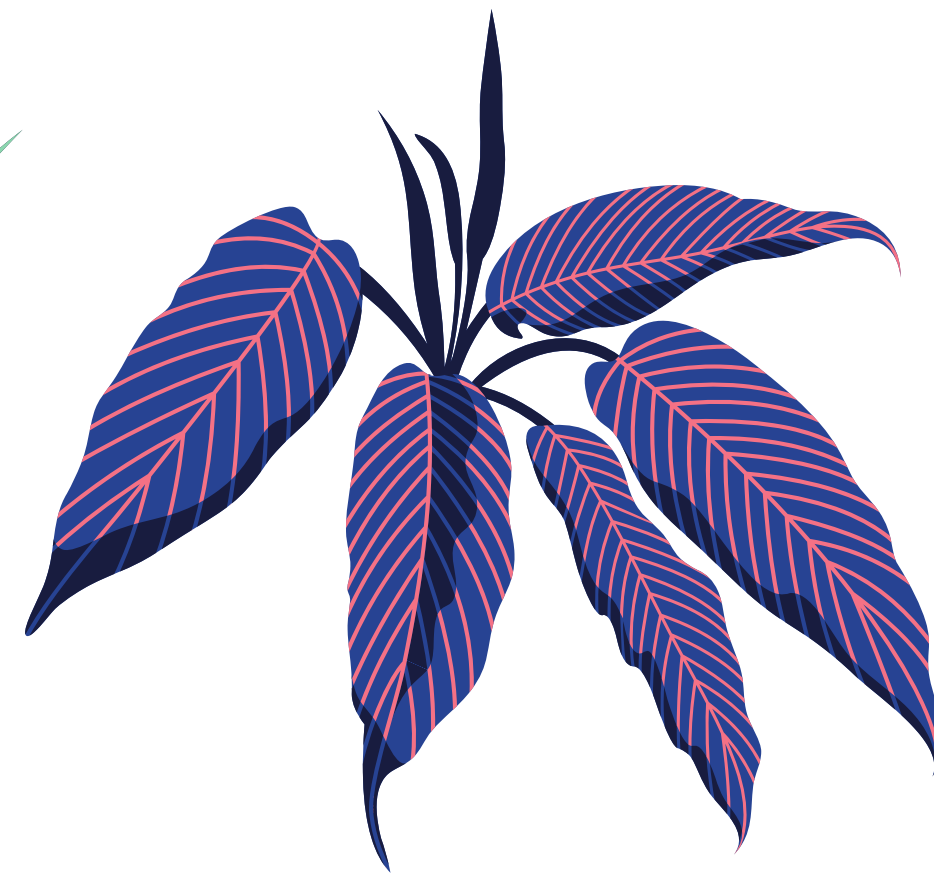
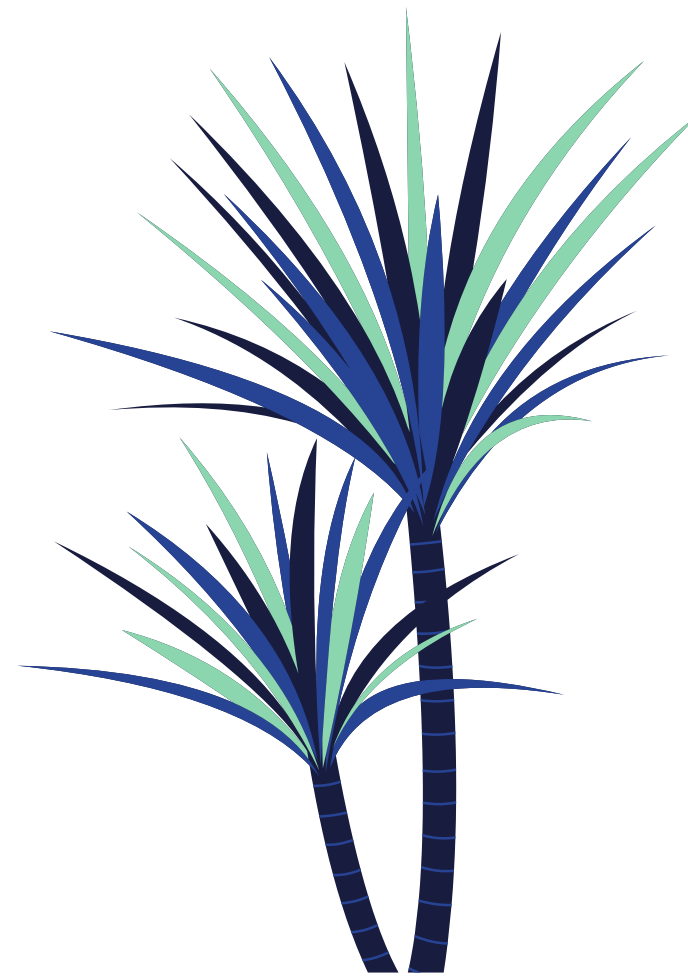
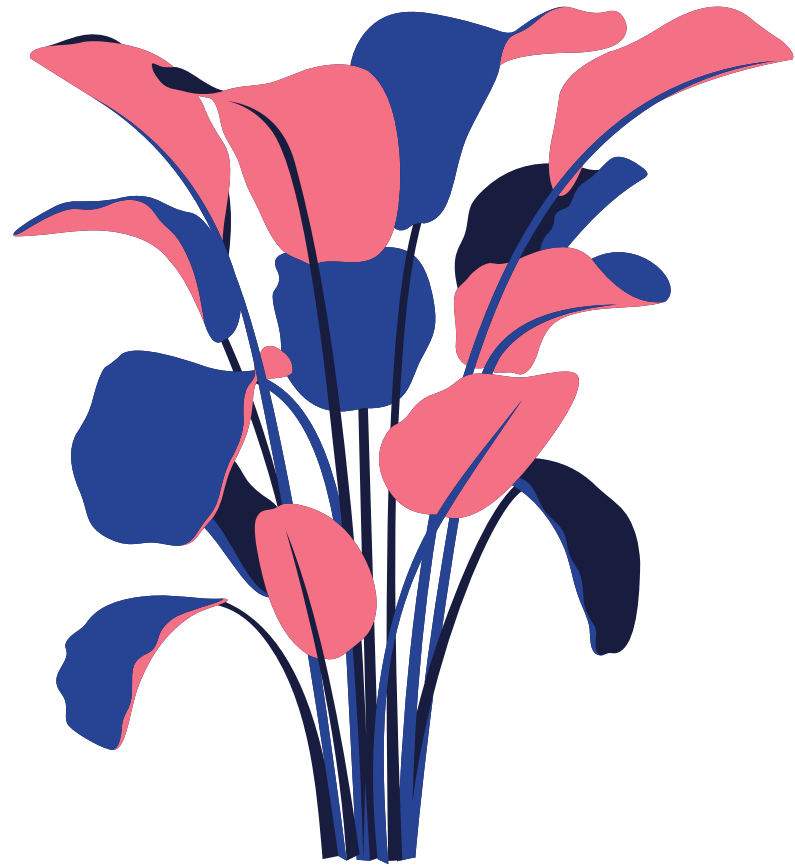
Safer and more secure Europe

- Supporting border services
- Problem with the border crossing (long waiting, smuggling)



Healthcare

Borders



Education

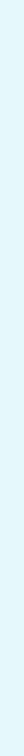

Environment

P2P actions


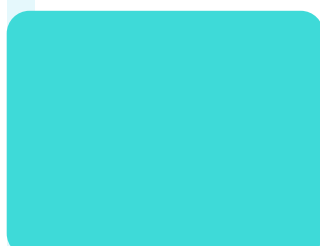


CONSULTATIONS WITH THE JPC AND NATIONAL AUTHORITIES

PRELIMINARY JPC DISCUSSION 11 OCTOBER 2019

- discussion on results of online survey and JPC members' preferences - negative selection of POs
- 
- 

E-MAIL CONSULTATIONS MARCH-SEPTEMBER 2020

- Questionnaire on the thematic focus of the Programme (sent March 2020)
 - Results discussed on zoom meetings with the NAs (June 2020)
- 
- 

RECOMMENDATIONS:

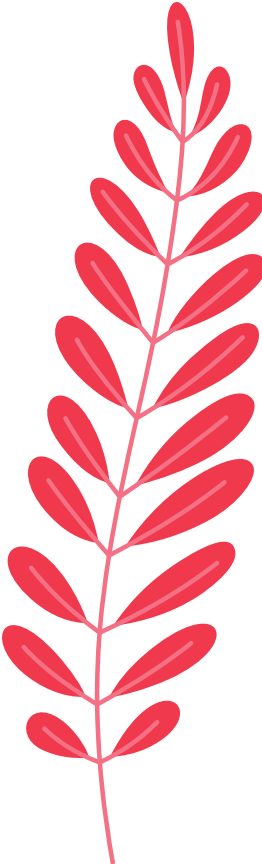
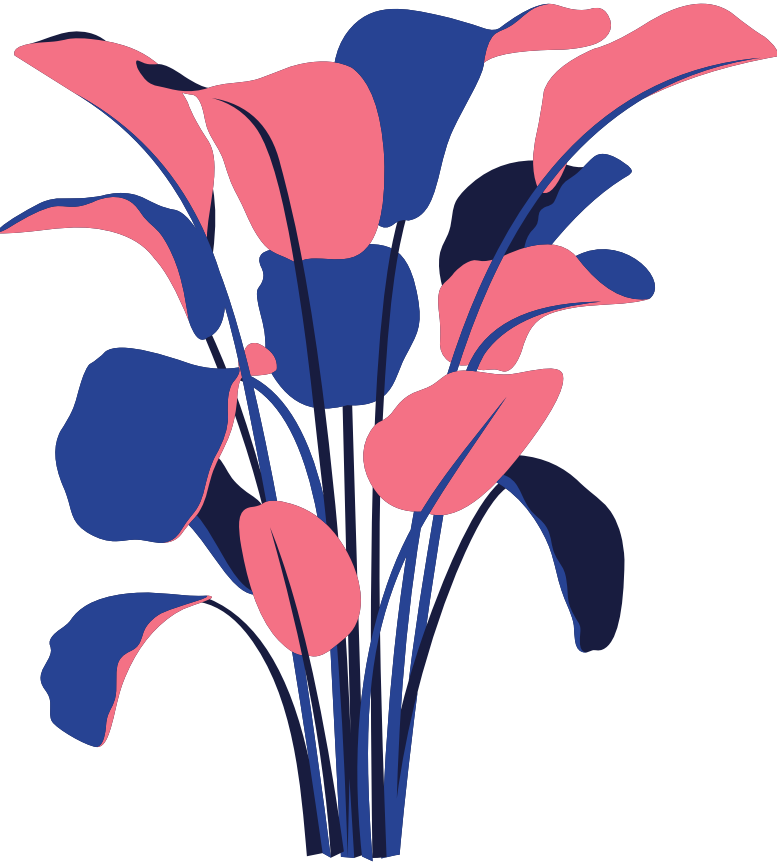
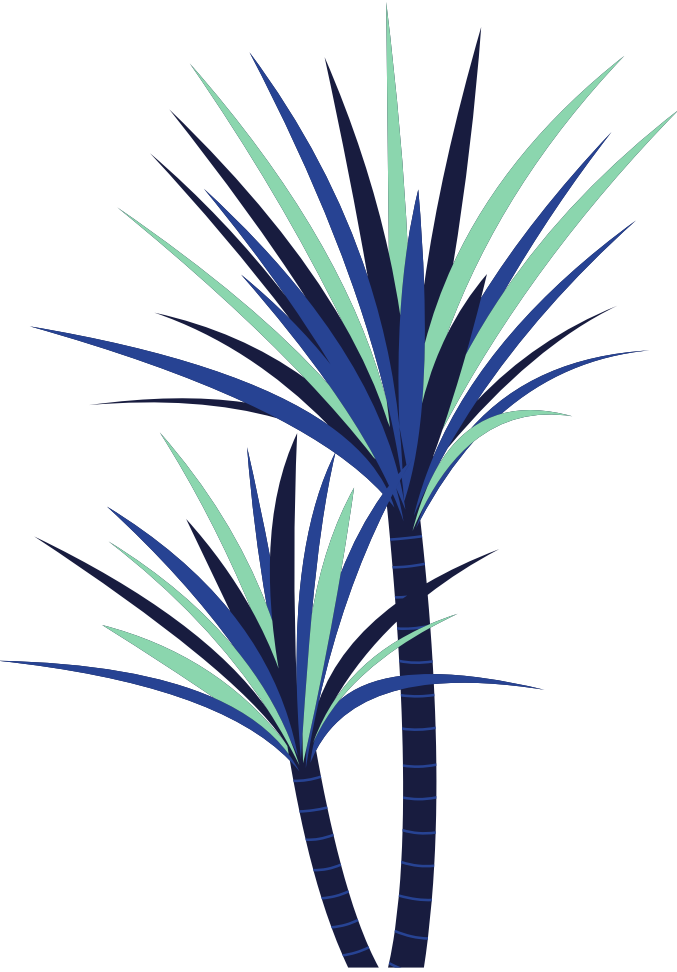
- Policy Objective 2 Greener Europe (6 out of 7 SOs)
 - Policy Objective 4 More social Europe (5 out of 10 SOs)
 - Interreg Specific Objective 1 Better cooperation governance (2 out of 4 SOs)
 - Interreg Specific Objective 2 Safer and more secure Europe (2 out of 3 SOs)
 - Policy Objective 5 (?) - tourism
- 
- 



Tourism

Healthcare

Borders



Education

Environment

P2P actions

SOCIO-ECONOMIC ANALYSIS

ACTIONS

- No renewable energy sources
- Air pollution

Promoting renewable sources of energy & energy efficiency measures

- Underinvestment in healthcare units

Supporting healthcare infrastructure, equipment (ambulances) and digitization (IT, trainings)

- Lack of investment in material resources of historical and cultural heritage

Protecting, developing & promoting heritage as a space for development of enterprises (accommodation, gastronomy services)

CONSULTATION WORKSHOPS FOR STAKEHOLDERS

ENVIRONMENT AND ITS PROTECION

Main challenges

- Insufficient quality of the natural environment
- Low ecological awareness

Strategic purpose

- Preservation of a friendly and safe natural environment

Operational purposes

- Increasing of using renewable energy sources
- Water resources protection
- Sustainable waste management
- Increase in ecological awareness of the inhabitants in the support area
- Protection and development of the protected areas system

CONSULTATION WORKSHOPS FOR STAKEHOLDERS

SOCIETY AND CULTURE

Main challenges

- Deeping social problems
- Low awareness of the role of cultural heritage as a factor in regional development

Strategic purpose

- Increase in the cross-border identity built on a shared historical and cultural heritage of the support area

Operational purposes

- Development of social capital in the support area
- Development of cooperation in the field of tourism
- Development of educational partnerships

CONSULTATION WORKSHOPS FOR STAKEHOLDERS

SAFETY AND COOPERATION

Main challenges

- Insufficiently developed cooperation in the area of rescue system in the support area
- Insufficiently developed healthcare system in the support area

Strategic purpose

- Maintaining a high level of safety in the support area

Operational purposes

- Improving the health of residents and the effectiveness of the healthcare system in the support area
- Increasing access to cross-border rescue services

CONSULTATION WORKSHOPS FOR STAKEHOLDERS

MOBILITY (DIGITALIZATION AND BORDER INFRASTRUCTURE)

Main challenges

- Limited mobility in the support area

Strategic purpose

- Improving mobility in the support area

Operational purposes

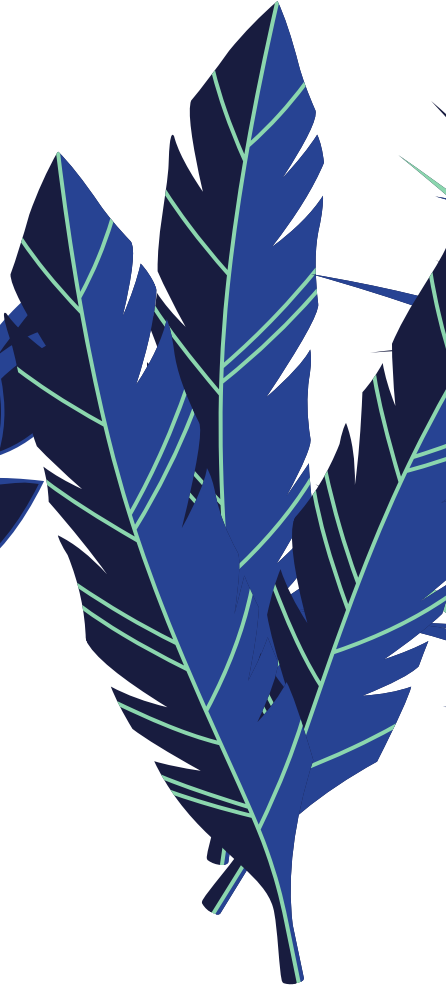
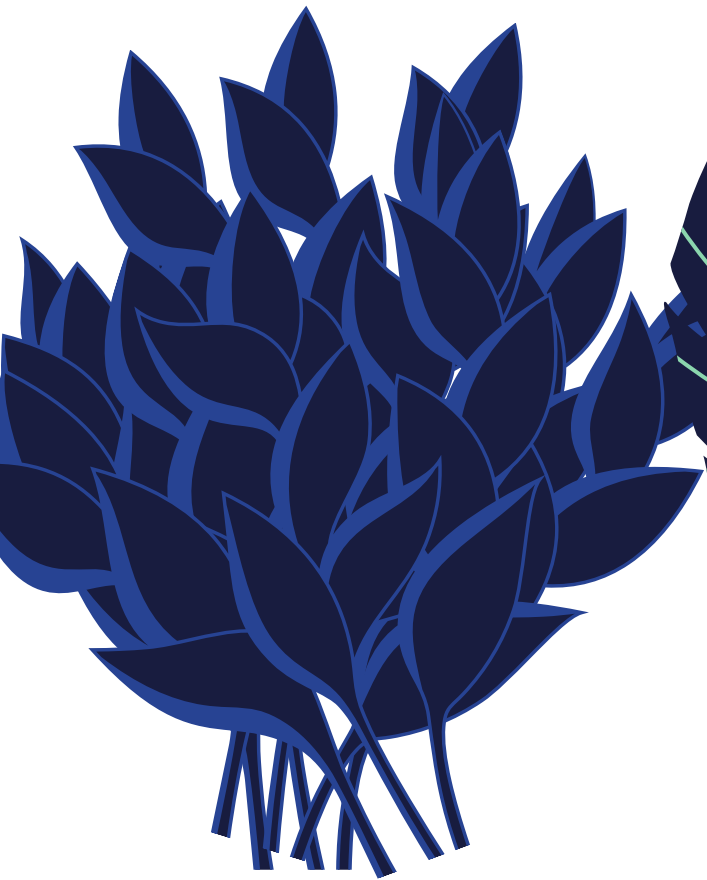
- Increasing the level of customs cooperation
- Improving quality of communication infrastructure



Tourism

Healthcare

Borders



Education

Environment

P2P actions

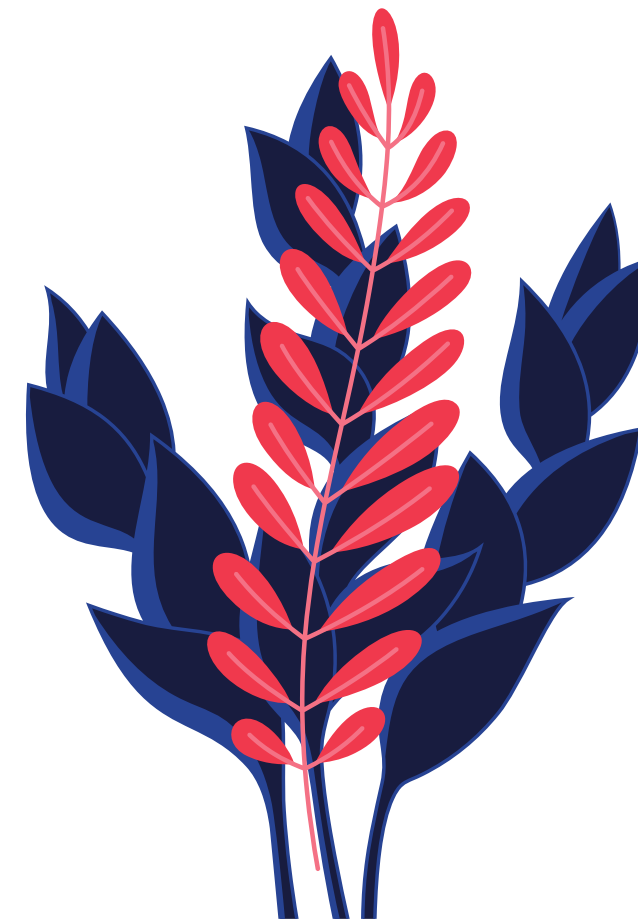
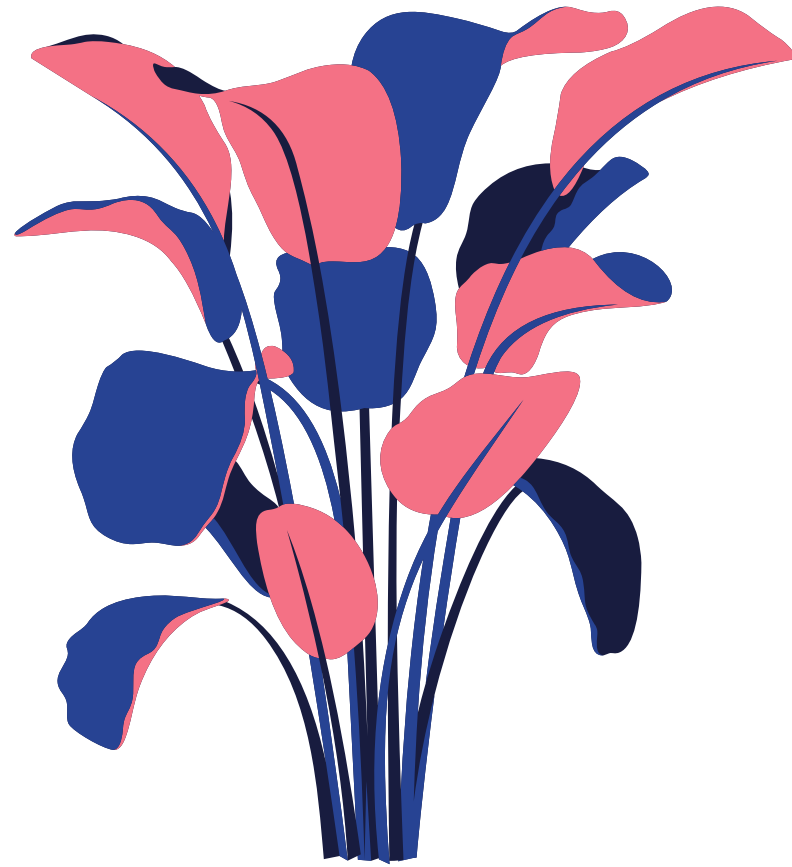
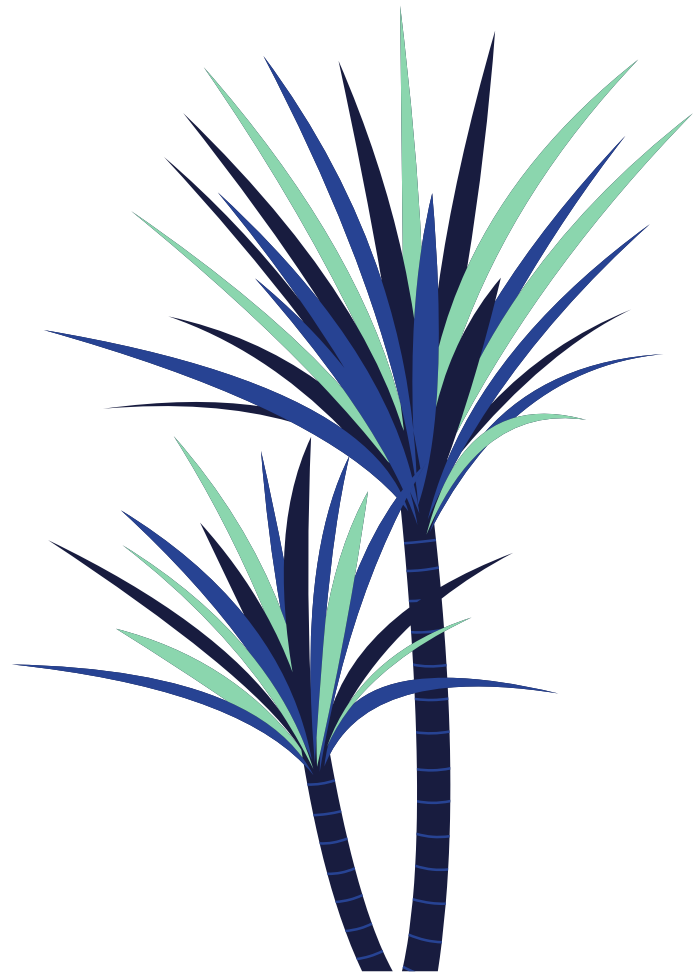


JPC WORKSHOP CONCLUSIONS: FINAL DECISIONS

29 September - 1 October 2020

Healthcare

P2P actions



Environment

Tourism

Borders

**Thank you for
your attention**



www.gov.pl/web/fundusze-regiony



@MFiPR_GOV_PL



@MinisterstwoFunduszyiPolitykiRegionalnej



#wspolna2przez4